

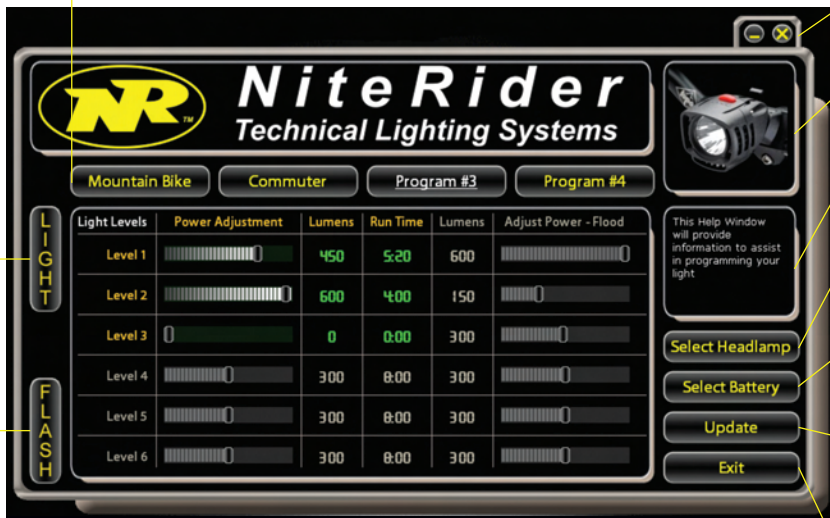
Common Buttons & Areas

There are a total of four (4) D.I.Y. Software control panel screens. One (1) screen is used to set "light levels" for the Pro 600 Single Beam headlamp and a second screen is used to set them for the Pro 1200 Dual Beam headlamp. Two (2) screens are used to create "flash settings" for either the Pro 600 single beam or Pro 1200 Dual Beam headlamp.

All 4 screens have common buttons and areas surrounding the center, or control panel portion. The diagram below shows descriptions of the buttons and areas common to all D.I.Y. Software control panel screens.

Program Buttons

Click the Program number (1-4) you wish to create or modify. Selected Program name changes to white. Each Program has its own light levels and flash settings. Double click to rename the selected Program.



Light Button
Click to display light levels.

Flash Button
Click to display flash settings.

Minimize/Exit Tab

Click to either minimize the D.I.Y. Screen or exit the D.I.Y. Software

Headlamp Photo Area

A photo of the headlamp that has been selected is displayed in this framed area.

Help Window

This window displays information about the use of each common button.

Select Headlamp Button

Click and a pull down lets you select either the Pro 600 single beam or Pro 1200 dual beam.

Select Battery Button

Click and a pull down lets you select the battery pack you'll be using, either the 4-cell, 6-cell or 8-cell.

Update Button

Click to transmit all 4 Programs to the headlamp. Transmission requires headlamp be connected to the docking station and docking station must be connected to your computer's USB port.

Exit Button

Click to exit the D.I.Y. Software

Control Panel – Light Level Screen Pro 600



Click the "Light" Button to display the light levels screen.

The large framed area in the center of the screen is the "control panel". It is here that you set the lumens of light output and run time for each light level. You can set a maximum of 6 light levels.

Pro 600

Only the left four (4) columns on the control panel are activated if you've selected the Pro 600 Single Beam. These columns are titled: Light Levels, Power Adjustment, Lumens and Run Time.

To change the lumens of light output "grab" the end of the slider control with your cursor. Slide to the right to increase lumens and decrease run time. Slide to the left to decrease lumens and increase run time. Values change in 50 lumen increments. The maximum lumens are 600 and the minimum is 50.

Setting a light level to zero (0) lumens de-activates it and all subsequent light levels.

Control Panel – Light Level Screen Pro 1200



Pro 1200

All six (6) columns on the control panel are activated if you've selected the Pro 1200 Dual Beam. From left to right - these columns are titled: Light Levels, Adjust Power - Spot, Lumens, Run Time, Lumens, and Adjust Power - Flood.

"Grabbing" the end of the slider controls with your cursor, independently change the lumens output for the spot and flood beams. Sliding to the right will increase lumens and decrease run time while sliding to the left will decrease lumens and increase run time. Values change in 50 lumen increments. The maximum is 600 lumens from each beam, for a combined total of 1200 lumens. The minimum is 50 lumens.

Setting both the spot and flood beams to zero (0) lumens de-activates it and all subsequent light levels.

The latest version of the D.I.Y. Software is available to download at www.niteriderservices.com.



NiteRider Technical Lighting Systems, Inc.
8205 Ronson Rd., Suite E
San Diego, CA 92111

1.800.466.8366 niterider.com

Part Number 080-21915

Control Panel - Flash Setting Screen Pro 600 + 1200 Models



Click the **"Flash"** Button to display the flash settings screen.

The large framed area in the center of the screen is the "control panel". It is here that you set flash modes. For each setting select from a list of 4 available flash modes or customize your own. You can set a maximum of 6 flash modes.

Selecting "off" as a setting de-activates that setting and all subsequent flash settings.

The Flash Setting control panel is the same for both the Pro 600 and Pro 1200 Systems. Flash patterns on the Pro 1200 are seen from the Flood beam only.

Customize a Flash Setting Pro 600 + 1200 Models



Click the **"Customize"** Button in the lower left corner of the Flash Control Panel to display the customize a flash setting screen.

Changing the length of time the light is on or off creates different flash patterns. "Grabbing" the end of the slider controls with your cursor, adjust the length of time the light will be "off" and the length of time the light will be "on". Sliding to the right increases the time on or off while sliding to the left decreases the time on or off. Time values change in .05 second increments from a minimum of .05 seconds to a maximum of 1.0 second.

Click the **"Test"** Button to view the Flash pattern and the Button is renamed **"Stop"**. Click the **"Stop"** Button to turn-off viewing.

Click the **"Save"** Button to save the Flash pattern, and return to the Flash Setting Control Panel.

D.I.Y. Pro LED Series Software Guide

The latest version of the D.I.Y. Software is available to download at www.niteriderservices.com.

Runs under Windows 2000 and above